

Text A

Sepsis is a life threatening condition which arises when the body's response to an infection injures its own tissues and organs. Sepsis may lead to shock, multiple organ failure and death especially if not recognized early and treated promptly. Early intervention has been shown to save lives and reduce length of hospital stay and the need for Critical Care admission.

When identifying suspected cases of sepsis, take into account that patients can have non-specific presentations, for example they commonly report feeling merely 'very unwell'. It is possible that they may have sepsis but do not have a high temperature. Pay particular attention to concerns expressed by family and carers, such as changes in the patient's normal behaviour.

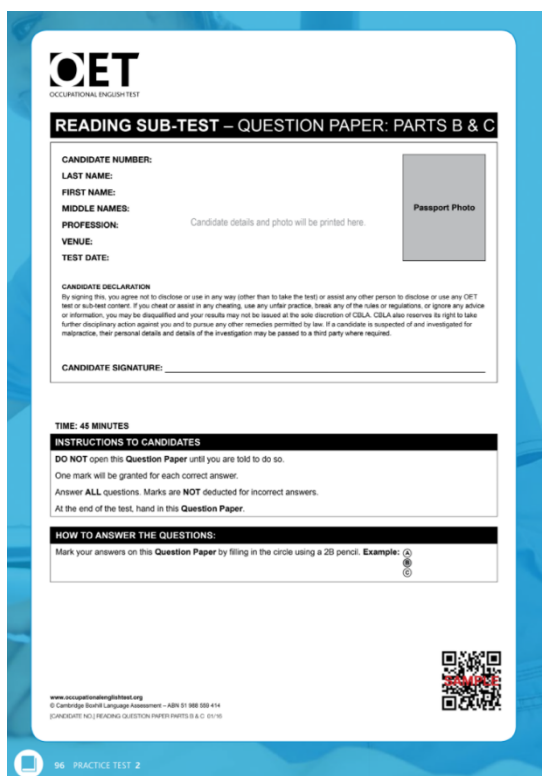
When assessing patients with suspected sepsis, it is important to try to identify

- the possible source of infection
- factors that make patients more vulnerable to sepsis
- any indications of clinical concern, such as new abnormalities of circulation or respiration.

TODAY: Reading Part B

1. *Review Format*
2. *Review Technique & Questions*
3. Practice 4 Questions & Analyse answers

1. Part B: What the is like / The shape of the test



1. **How many questions are there?**
6
2. **How much time do you have?**
45 minutes for B and C (2 mins for each question)
3. **What is type of questions do you get?**
Multiple Choice Question
4. **How many question options are there?**
3 options (A, B, C)
5. **How long are the texts?**
Short texts (120-200)
6. **What type of texts will you read?**
Workplace communications / practical
Example: emails, guidelines, memo, etc.
7. **What Reading skill are they testing in Part B?**
Gist / Main ideas

Alain: ‘Match the question main idea to the text main idea’

Main idea:

Sport’s Alain plays

2. Technique: What's the best way to do this?



1. The guidelines inform us that personalised equipment for radiotherapy
2.
 A is advisable for all patients.
 B improves precision during radiation.
 C needs to be tested at the first consultation.

Elimination:

1. Not given
2. Opposite
3. Doesn't answer question
4. Partial

2. simplify the question / understand the question

3.

Guidelines: Radiotherapy Simulation Planning Appointment Think about the question & read

The initial appointment may also be referred to as the Simulation Appointment. During this appointment you will discuss your patient's medical history and treatment options, and agree on a radiotherapy treatment plan. The first step is usually to take a CT scan of the area requiring treatment. The patient will meet the radiation oncologist, their registrar and radiation therapists. A decision will be made regarding the best and most comfortable position for treatment, and this will be replicated daily for the duration of the treatment. Depending on the area of the body to be treated, personalised equipment such as a face mask may be used to stabilise the patient's position. This equipment helps keep the patient comfortable and still during the treatment and makes the treatment more accurate.

Simply: make it easier

personalised equipment for radiotherapy...what?

1. 'Remove unnecessary words'
2. **Do not change the meaning**
3. Put 'what' at the end

QUICK PRACTICE: Part B

1 The email reports that all test results need to be

Test results need to be...what?

Part C:

2 In the third paragraph, some academics think that one advantage of the treatment is

Some academics think 1 treatment advantage is... What?

